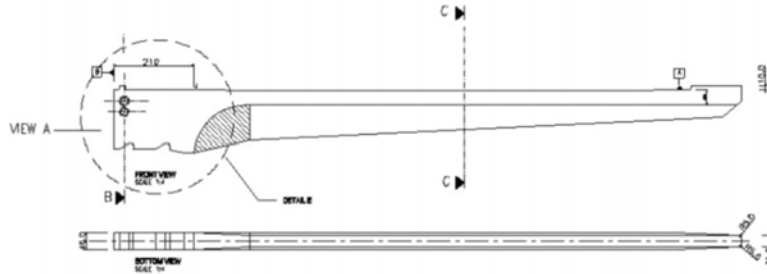




Appendix A Product Specifications Front Lift Weighing System –V3



Normal Operation Weight – Maximum safe vertical load for normal operation, where the load is placed half way down the length of the Weigh Arm (as is with a pocket of a bin) is 2000kg per Weigh Arm – I.e. 4000kg in total bin weight.

Certification – A Certified “National Measurement Institute” system is available upon request.

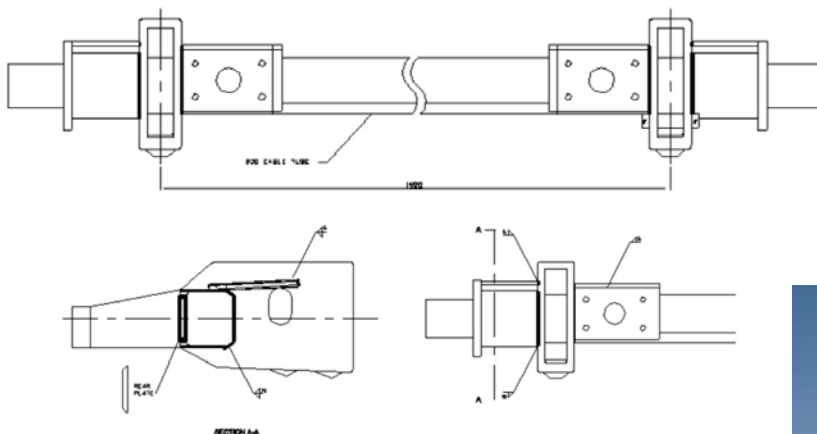
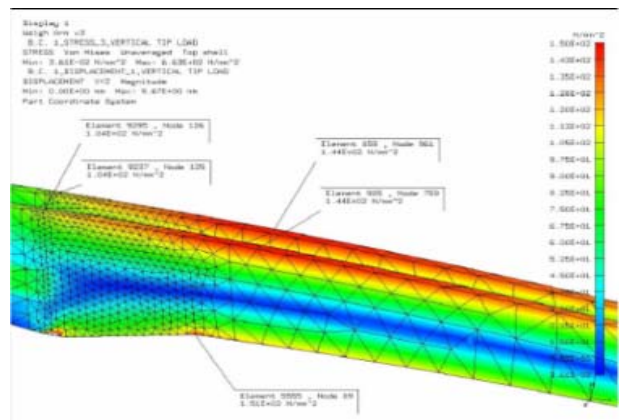
Total Length of Weigh Arm – 1645mm(long)
–1545mm(short)

Length from Bin Stop – 1450mm(long)
–1350mm(short)

Weighable Length –1280mm(long)
–1180mm(short)

Width at Tip – 30mm

Composition of Weigh Arm – Solid Bisalloy
80 plate machined to size.



Socket Interface – Multiple designs to fit all major models of Papas, Superior Pak and Macdonald Johnston.

Weight of Complete System – 170kg

Power Supply – 12/24 Volt DC

Driver Interaction – Zero, system is completely automated.

Serviceability – Modular design for servicing with WeighMate computer diagnostics

Durability – Greater than 5 years

Accuracy – Better than 10% per bin lifted.

System Integration – Communicates with most IT systems.



If you can measure it, you can manage it!

WEIGHMATE PTY LTD

Unit 1, 91-93 Cowpasture Road Wetherill Park NSW 2164 SYDNEY AUSTRALIA

ABN: 25 105 582 189 Email: info@weighmate.com.au Ph: +61 2 9756 2622 Fax: +61 2 9756 5275